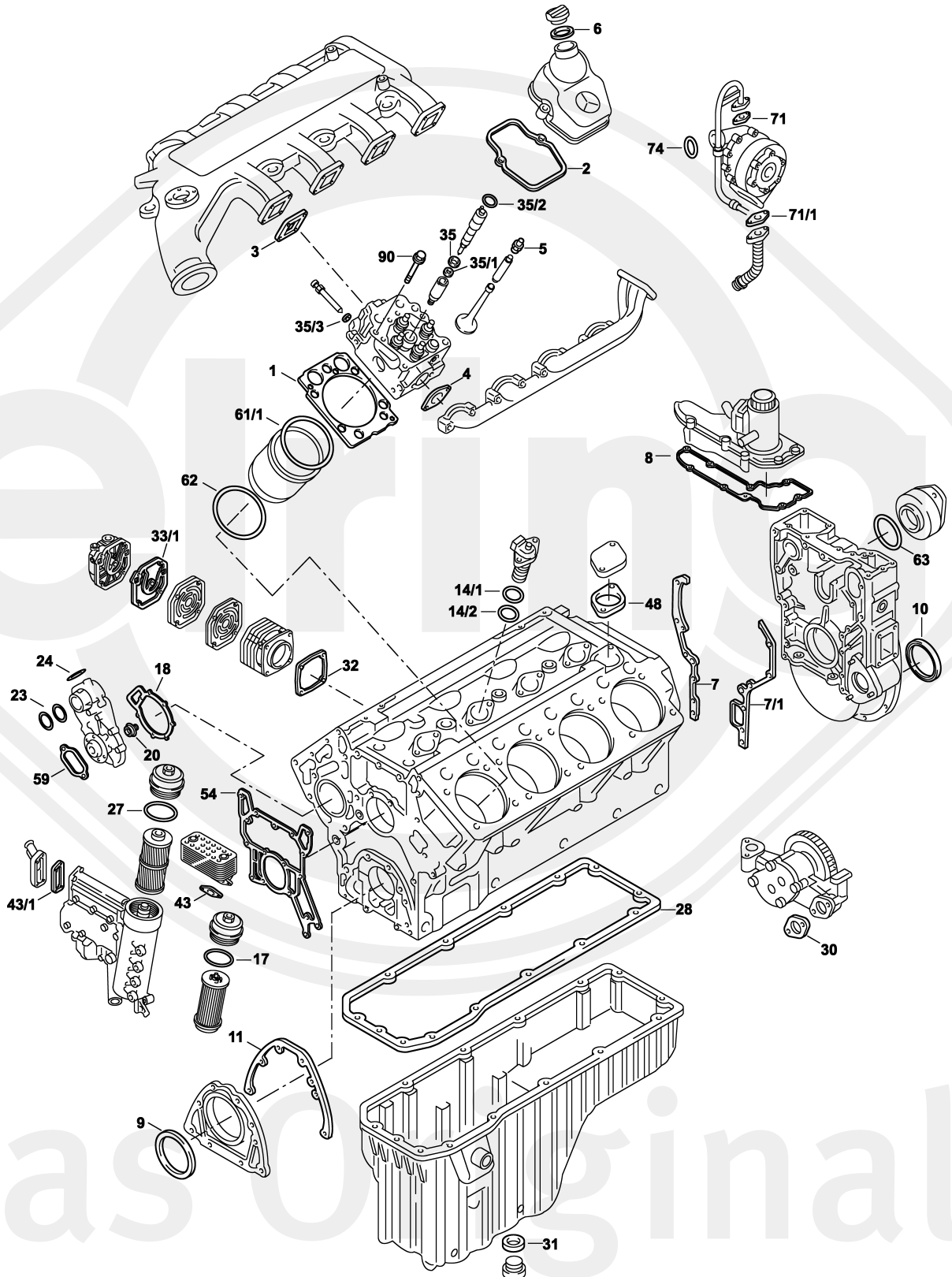




Das Original

Mercedes-Benz

OM 502 A | LA





522.940-943 | 950-953

542.920-926 | 940-948 | 956-958 | 960-966 | 970 | 971

942.900 | 910-912 | 925 | 930 | 960 | 967 | 970 | 980 | 990 | 991-993



S ⊕*	166.350	1x	-	-	-	→  012090  052.481 
S ⊕*	166.370	1x	-	-	-	 012091 → 084423  052.481 
S ⊕*	583.180	1x	-	-	-	 084424 → 155295  052.481 
S ⊕*	583.190	1x	-	-	-	 155296 → 357748  052.481 
S ⊕*	529.740	1x	-	-	-	 357749 →  066.723 
ES	447.215	8x	541 010 51 20	-	-	→  084423  052.481
ES ⊕	154.200	8x	-	-	-	→  084423  052.481
ES	711.444	8x	541 010 52 20	-	-	 084424 → 155295  052.481
ES	001.832	8x	457 010 62 20	-	-	 155296 → 357748  052.481
ES	290.400	8x	-	-	-	 357749 →  066.723
CS *	447.231	1x	542 010 02 05	-	-	→  012090 
CS *	470.321	1x	542 010 04 05	-	-	 012091 → 089.131 
CS *	438.950	1x	542 010 04 05	-	-	 089132 → 
ZLBS	722.480	8x	-	-	-	-
WPS	469.701	1x	542 200 07 01	-	-	-
SZ	633.360	1x	541 010 09 33	-	-	-
SZ	382.900	1x	541 015 16 80	-	-	-
SZ	066.460	8x	906 017 02 60	-	-	incl. 000.230/074.870/124.870



522.940-943 | 950-953

542.920-926 | 940-948 | 956-958 | 960-966 | 970 | 971

942.900 | 910-912 | 925 | 930 | 960 | 967 | 970 | 980 | 990 | 991-993



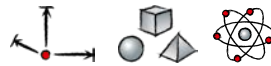
SZ	295.050	8x	906 017 08 60	–	incl. 000.230/074.870/835.160
LPS	354.170	1x	–	–	–
ZKS	060.220	8x	–	–	–
TLS	730.760	2x	–	–	–
1	052.481	8x	541 016 11 20	∅ 150,4 mm $\pm 1,25$ mm	→  357748
1	066.723	8x	541 016 13 20	∅ 150,4 mm $\pm 1,25$ mm	 357749 →
2	060.560	8x	541 016 03 21	–	→  084423
2	711.420	8x	541 016 04 21	–	 084424 → 155295
2	001.796	8x	457 016 02 21	–	 155296 →
3	470.290	8x	541 098 04 80	–	–
4	432.040	8x	541 142 01 80	–	–
5	567.401	32x	000 053 53 58	9x12/15x11,6 FPM PR	–
6		1x	111 018 00 80	47,5x59x2,3 HNBR A	–
7	133.320	1x	541 015 11 80	–	–
7/1	133.330	1x	541 015 12 80	–	–
8	470.300	1x	541 015 01 60	–	→  089131
8	152.260	1x	541 015 13 80	–	 089132 →
9	524.973	1x	014 997 46 47	105x130x12 AW/BS RD FPM	 476.070
9	766.853	1x	–	105x130x12 AW/BS RD PTFE/ACM	 476.070
9	369.901	1x	–	100x130x11 ASW RD PTFE/ACM	–
10	562.920	1x	013 997 14 47	120x140x13 AW/BS LD FPM	 834.289
10	766.829	1x	–	120x140x13 AW/BS LD PTFE/ACM	 834.289
10	354.090	1x	–	115x140x12 ASW LD PTFE/ACM	–
11	690.331	1x	541 011 00 80	EWP / soft material	–
11	075.913	1x	541 011 01 80	Metaloseal	–
14/1	152.610	8x	023 997 64 48	47x2,5 FPM RD	–
14/2	152.630	8x	023 997 65 48	45x2,5 FPM RD	–
17	–	1x	022 997 89 48	–	–
18	804.260	1x	542 201 01 80	–	–
20	577.804	1x	001 201 19 19	–	–
23	495.980	2x	024 997 28 48	58,5x67,5x4,3 EPDM PR	–



522.940-943 | 950-953

542.920-926 | 940-948 | 956-958 | 960-966 | 970 | 971

942.900 | 910-912 | 925 | 930 | 960 | 967 | 970 | 980 | 990 | 991-993



24		1x	942 501 00 80	-	-
27	-	1x	021 997 27 48	-	-
28	445.991	1x	542 014 03 22	-	-> 012090 AL
28	515.460	1x	542 014 06 22	-	012091 -> PLASTIC
30	759.300	1x	917003 036003	-	-
31	125.105	1x	007603 020103	20x26x1,5 CU A	-
31	128.503	1x	000000 001085	22x27x1,5 CU A	-
31	133.400	1x	007603 026101	26x32x2 CU A	-
31	000.230	1x	-	20,9x3 FPM RD	-
32	452.022	2x	541 131 07 80	-	-
33/1	401.652	1x	541 131 09 80	-	-
35	124.870	8x	906 017 02 60	7x15,1x1,5 CU PR	-
35	535.160	8x	906 017 08 60	7x14,9x17,4 CU PR	-
35/1	074.870	8x	541 997 07 45	25x3,7 FPM RD	-
35/2	000.230	8x	541 997 05 45	20,9x3 FPM RD	-
35/3	761.559	8x	541 997 06 45	11x3 FPM RD	-
43		2x	917003 028002	-	-
43/1	-	1x	541 188 00 80	-	-
48	207.411	1x	541 201 01 80	-	-
54	052.351	1x	541 184 09 80	-	-
59		1x	942 501 00 80	-	-
61/1	162.050	8x	541 011 00 59	153,3x163,7x0,15 A	-
61/1	153.371	8x	541 011 04 59	153,4x164,1x0,15 A	-
62	722.470	12x	541 997 17 45	150x4,8 FPM RD	-
63	748.501	1x	005 997 19 45	92x3 NBR RD	-
71	756.874	2x	442 187 01 80	-	-> 064475
71/1	756.866	1x	442 187 00 80	EWP / soft material	-
71/1	527.090	1x	541 187 00 80	Metaloseal	-
74	249.220	4x	024 997 16 48	54x8 FPM RD	-
90	060.220	8x	-	M18x2x210	-